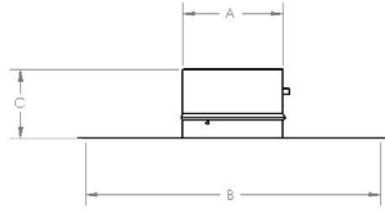
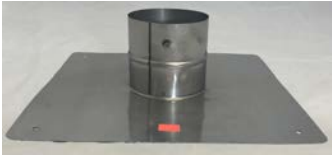


S.S. CLIPFLASHING



Use to seal top of masonry chimney and support the flex.

Also available in 316.

Top plates / flashings 9"-16" in 304 24 gauge.

"B" can be customized according to preference and/or requirements.

DIAMETER	CODE	A	B	C
3"	SSFL03	3.375"	14"x14"	4"
4"	SSFL04	4.375"	14"x14"	4"
5"	SSFL05	5.375"	14"x14"	4"
5.5"	SSFL05.5	5.875"	14"x14"	4"
6" DD	SSFL06	6.125"	14"x14"	4"
6" REG	SSFL06R	6.375"	14"x14"	4"
7"	SSFL07	7.375"	14"x14"	4"
8"	SSFL08	8.375"	14"x14"	4"
9"	SSFL09	9.375"	14"x14"	4"
10"	SSFL10	10.375"	14"x14"	4"
12"	SSFL12	12.375"	14"x14"	4"
14"	SSFL14	14.375"	14"x14"	4"
16"	SSFL16	16.375"	14"x14"	4"