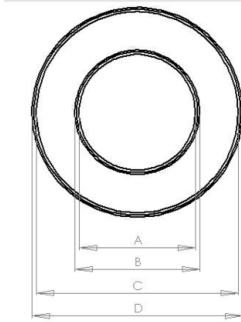


# DIRECT VENT - ALUMINUM 3003



DIAMETER	A	B	C	D
4"-7"	3.875	4.25"	6.875"	7.25"
5"-8"	4.875"	5.25"	7.875"	8.25"

Tested and catalogued under UL 1777 / 441 - ULC S-635 / S-640.

Designed for appliances tested and listed for direct vent.

Made of two ply .005" aluminum 3003.

Available in multiple diameters to accommodate most direct vent appliances.